



PORTS-TO-PLAINS

ALLIANCE

Securing the Benefits of Commerce to
North America's Energy & Agriculture Heartland

NEWS RELEASES

[Could the northern border be secure and efficient?](#)

The following two articles address ongoing discussions between the United States and Canada regarding security along the 49th parallel. The first article was written by five Canadian Ambassadors to the United States between 1989 and 2009. The second article was a response from a bi-partisan group of four U.S. Ambassadors to Canada.



[Hearing officer: ITD should issue megaload permits](#)

Good end of year news ... at least from the hearing officer ... Idaho DOT must still issue permits ... opponents may appeal ... weather may slow progress.

May 2011 be a Great Year for You and Yours!

Upcoming Ports-to-Plains Alliance Activities

- January 3 -- Ports-to-Plains Alliance Board of Directors Meeting, Austin, TX
- January 3-5 -- Texas Transportation Forum
- January 11-12 -- Wyoming Economic Development Winter Meeting, Cheyenne, WY
- January 25 -- Montana Economic Development Association Day in the Rotunda, Helena, MT
- February 8-10 -- PTP Alliance Staff in Washington DC
- February 16-18 -- PTP Trade Task Force, San Angelo, TX
- April 6-8 -- PTP Energy Summit, Broomfield, CO
- May 2-6 -- Ports-to-Plains Fly-in, Washington, DC (Mark Your Calendar Now)



TRANSPORTATION

[House Rules Changes May Affect Transportation Funding](#)

The article below addresses a probable change in House rules that could certainly affect transportation funding in the 112th Congress. Our team in Washington, DC is very involved, along with other key organizations in this discussion. See letter from 20 organizations below.

Ports-to-Plains staff will be in Washington, DC the week of February 7-11, 2011. In addition to telling the Ports-to-Plains story, about its importance to the region, nationally and internationally, we will be telling the story about transportation in general and its importance to the economy.

[Montana Governor says oil company megaloads have their place](#)

[Texas Transportation Commission takes look at miles-driven tax method](#)

[Why we get the transportation projects we don't want \(unfortunately true but still hilarious\)](#)

Economic Development

[Amarillo: Hotbed of Freelancers, and Other Outsourcing Surprises From 2010](#)

Workers in Amarillo, Texas collectively earned the fourth-largest amount of money of any city in the U.S. from gigs they found via the job-posting site Elance. That's just one of the interesting employment trends discovered by the freelance talent sourcing site in its 2010 Year in Review...



[Modest Growth in Manufacturing is Sustainable](#)

Government ENERGY of Alberta

[Alberta kick-starts new world-class monitoring system](#)

A group of independent experts will provide detailed action items on how to best set up, operate, and govern a world-class environmental monitoring, evaluation, and reporting system for Alberta's oil sands. The terms of reference that will guide that work is now complete and publicly available.

"These efforts will lead to a new, robust world-recognized monitoring system that will give assurances the oil sands are being developed under the closest of scrutiny and oversight," said Environment Minister Rob Renner. "The system must meet the environmental challenges we face today, be adaptable enough to respond quickly to change, and anticipate and monitor areas where future cumulative environmental impacts may occur." ...

[EPA: Views from Texas](#)

[How Congress Can Stop the EPA's Power Grab \(Opinion\)](#)

[House Call: Support Builds for Keystone XL](#)

[Fossil Fuels or Alternatives?](#)

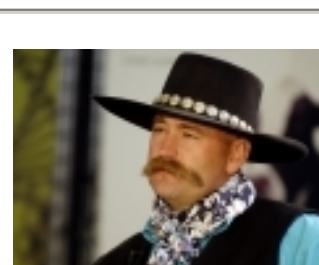
[Development of oilsands needs some perspective \(Opinion\)](#)

[EPA moving unilaterally to limit greenhouse gases](#)

AGRICULTURE

[A New Year's Resolution: I am going to speak up about Agriculture ... Energy ... Transportation!](#)

The Ports-to-Plains Alliance agrees with Trent Loos' comments in the following article. His comments are on target for both agriculture and energy and yes, transportation. Until we as citizens step up and share the reality of resource production and its importance, the average citizen ... yes, even those living around us in the Ports-to-Plains region will continue to absorb the falsehoods of those who try to affect our future.



[False Attacks on Animal Agriculture by HSUS](#)

[An Inside Look at Beef Processing](#)

Mark Your Calendar!

2nd Annual PORTS-TO-PLAINS ALLIANCE ENERGY SUMMIT

April 6-8, 2011
Omni Interlocken Resort
Broomfield, Colorado

PORTS-TO-PLAINS ALLIANCE STAFF

Michael Reeves
President
5401 N MLK Blvd. #395
Lubbock, TX 79403
P: 806-775-2338
F: 806-775-3981
michael.reeves@portstoplains.com

Joe Kiely
Vice President of Operations
PO Box 9
Limon, CO 80828
P: 303-586-1787
F: 719-775-9073
joe.kiely@portstoplains.com



Board Member
Spotlight
Dave Nix

[Lamesa, Texas](#)

Duffy Hinkle
Vice President of Membership & Marketing
5401 N MLK Blvd. #395
Lubbock, TX 79403
P: 806-775-3373
F: 806-775-3981
duffy.hinkle@portstoplains.com

Cal Klewin
Executive Director
Theodore Roosevelt Expressway
PO 1306 22 E Broadway
Williston, ND 58802
P: 701-577-8110
cal@trexpressway.com

"West Texas has seen a tremendous increase in general economic activity because of higher oil prices, and the development of wind energy, among other things," stated Nix. "The increased truck traffic has been noticeable over the past few years, and I am just glad that the Ports-to-Plains Trade Corridor was already in place, and not just some drawing board dream."

[LAMESA VIDEO](#)

[Lamesa Economic Development Corp](#)

[Lamesa Chamber of Commerce](#)



www.portstoplains.com

LEARN • PARTICIPATE • JOIN

5401 N MLK Blvd. Unit #395 | Lubbock, TX 79403 | Ph: (806)775-3373

This email was sent to joe.kiely@portstoplains.com. To ensure that you continue receiving our emails, please add us to your address book or safe list.

[manage](#) your preferences | [opt out](#) using TrueRemove®.

Got this as a forward? [Sign up](#) to receive our future emails.