

# Theodore Roosevelt Expressway Update

Paving the Future with a Bridge



**PAVING THE FUTURE**  
OCTOBER 28

# North Dakota



  
**PAVING THE FUTURE**  
OCTOBER 28



# Long X Bridge Nearing Completion





# Long X Bridge Nearing Completion



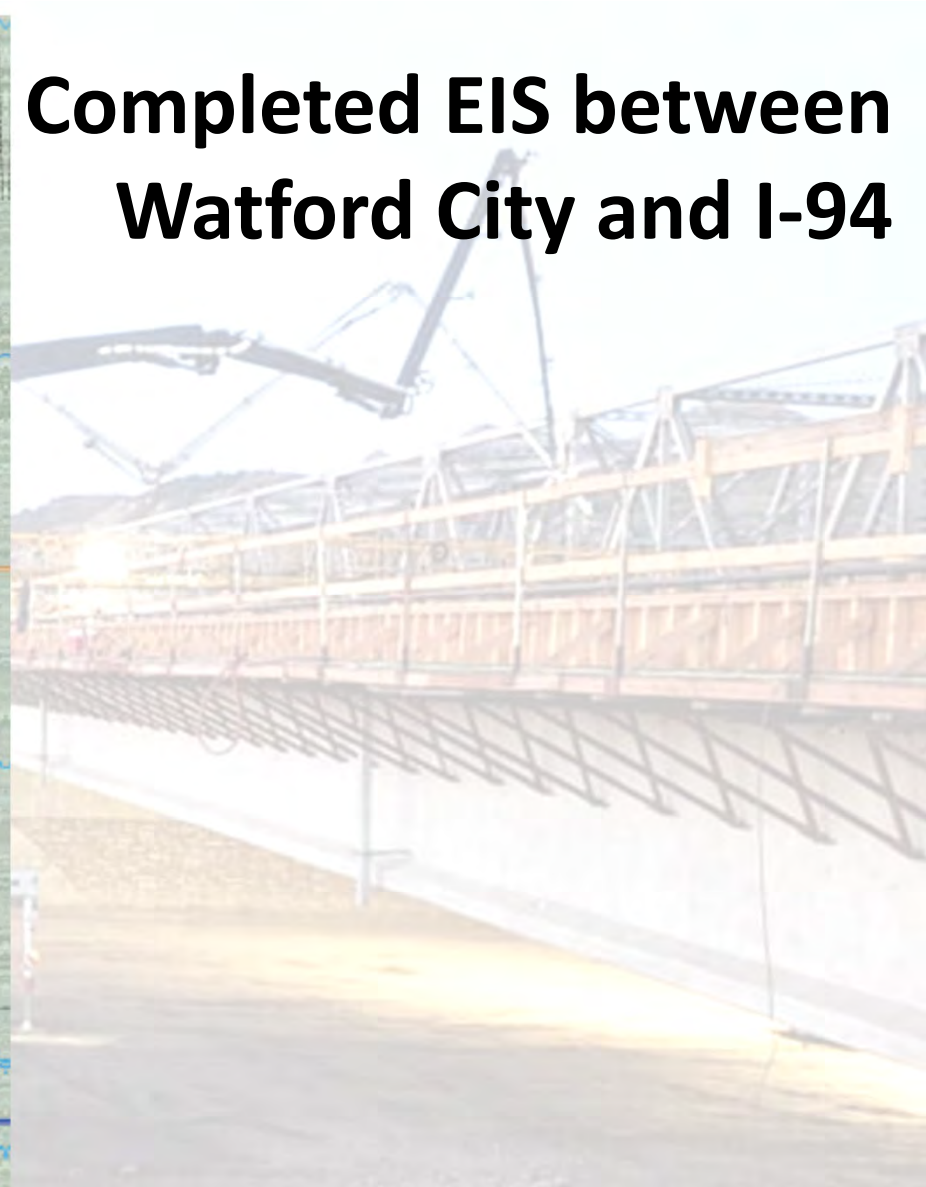


# Long X Bridge Nearing Completion





# Completed EIS between Watford City and I-94



# Belfield Project



- A turn lane project is scheduled on US 85 in Belfield for the 2021 construction season.
- The project consists of several right and left turn lanes on US 85 in Belfield between County Highway 10 and the south interstate 94 ramps.
- Other work includes lighting, extending the pedestrian trail, and a possible pedestrian crossing.
- The estimated cost of this project is \$3 million.



# Turn Lane Project South of Belfield

- Due to increased traffic at the intersection of U.S. 85 and 38th St south of Belfield, a southbound right turn lane is planned for the 2022 construction season.
- The estimated cost of the project is \$200,000.





## Future Projects on U.S. 85



Traffic demand on US Highway 85

- NDDOT is actively seeking funding opportunities (Grants) to help in funding a 4-Lane roadway from I-94 to Watford City.
- Without a grant, the Department does not have the resources to move forward with a project. No improvements are shown in the DRAFT 2021-2024 State Transportation Improvement Program (STIP).

# Overweight/Oversize Permitted Loads on US 85







# Oversize/Overweight Permit Comparison

Year	U.S. 2 4-lane	U.S. 83 4-lane	I-29 4-lane	I-94 4-lane	U.S. 52 4-lane	U.S. 85 2-lane
2014		22,128	32,300			78,367
2015		15,438	25,460			57,637
2016		13,378	25,068			44,484
2017		11,452	25,332		15,664	45,540
2018	56,203	13,655	25,840	48,503	17,129	51,168
2019	59,816	15,124	25,268	46,963	16,570	51,669
2020 (3rd qtr)	35,359	9,382	18,217	31,439	11,153	26,416

# South Dakota



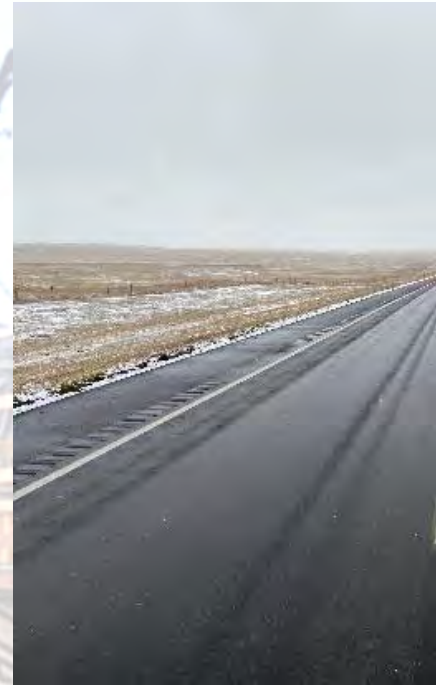
**PAVING THE FUTURE**  
OCTOBER 28



## South Dakota Update

# Belle Fourche to Ludlow (MRM 56 – 126)

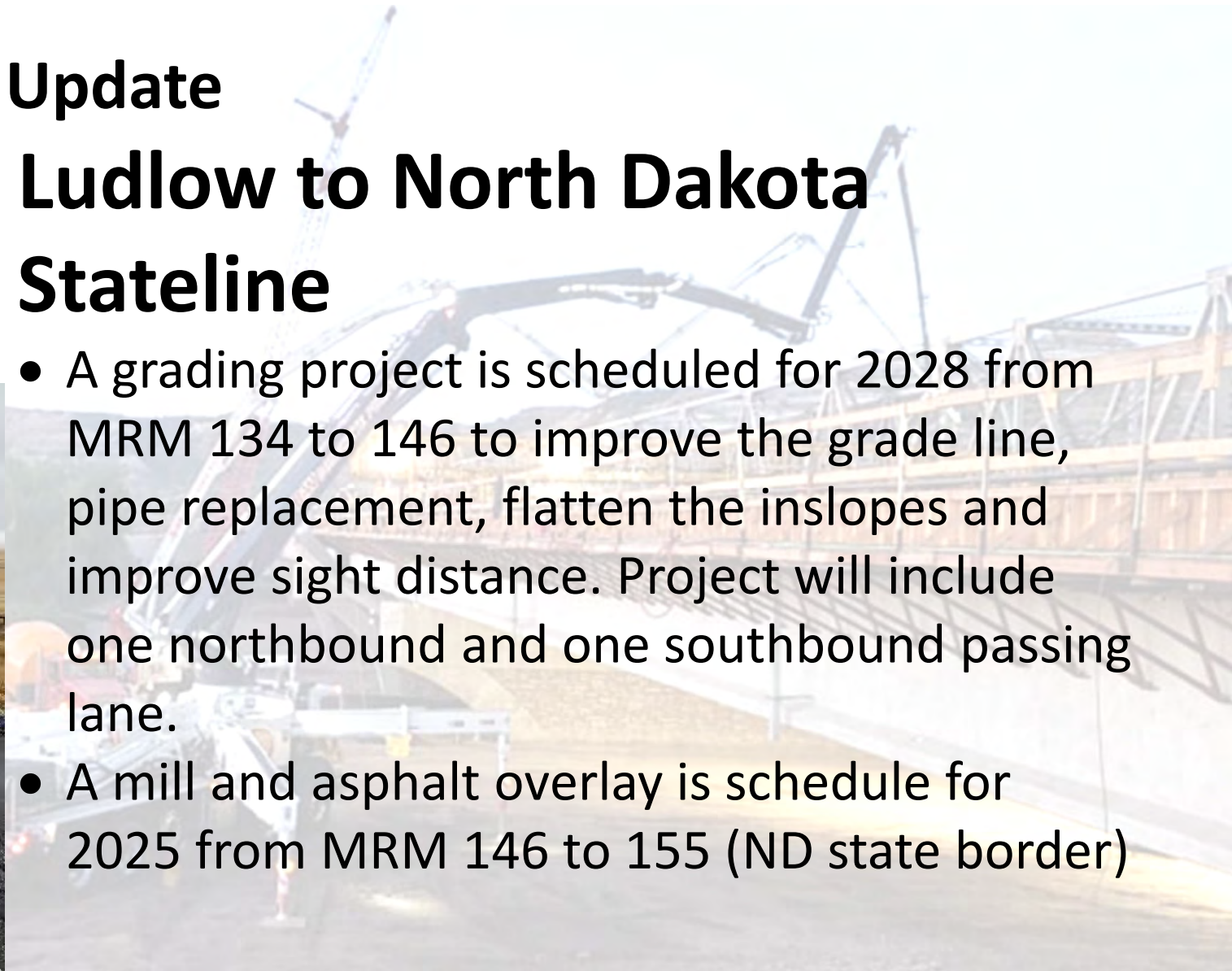
- Approximately 70 miles
- Entire length has been all received an asphalt overlay with paved shoulders in the last five years
- 35 miles was in 2020 (a few miles of this to finish in 2021 due to winter arriving this week).



## South Dakota Update

# Ludlow to North Dakota Stateline

- A grading project is scheduled for 2028 from MRM 134 to 146 to improve the grade line, pipe replacement, flatten the inslopes and improve sight distance. Project will include one northbound and one southbound passing lane.
- A mill and asphalt overlay is schedule for 2025 from MRM 146 to 155 (ND state border)

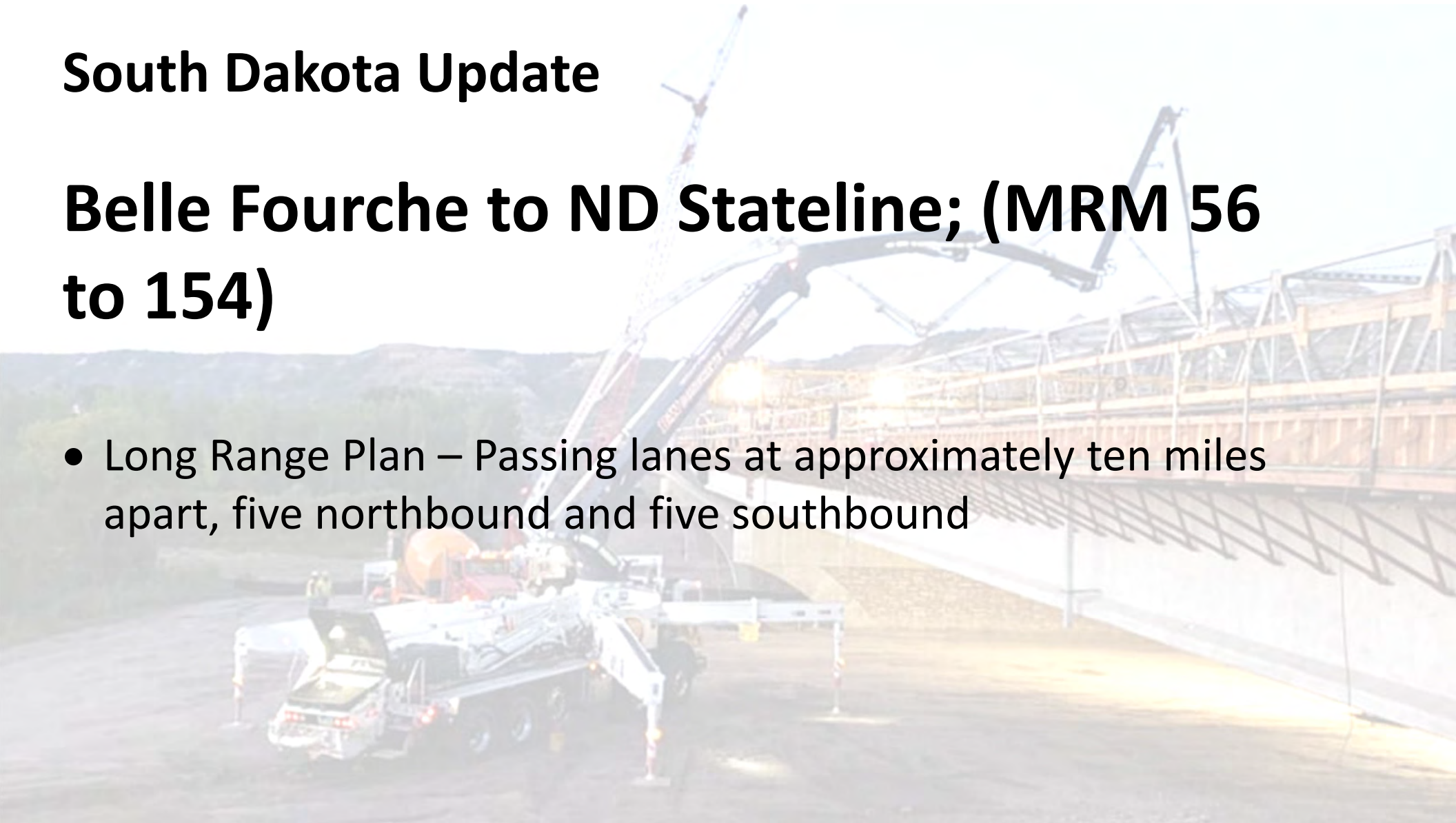




## South Dakota Update

# Belle Fourche to ND Stateline; (MRM 56 to 154)

- Long Range Plan – Passing lanes at approximately ten miles apart, five northbound and five southbound



# Montana



  
**PAVING THE FUTURE**  
OCTOBER 28



## Montana Update

# U.S. Highway 2 – Between Culbertson and Bainville

- Rebuilt to a finished 40' top with 8'-foot shoulders and two 12-foot driving lanes. That construction was completed this fall at a cost of about \$18M.



# Montana Update

## U.S. Highway 2 – Bainville-East Phase II between Bainville and the MT/ND State Line

- Future project would add two lanes that would be mostly divided.
  - The design is complete for this project and the right-of-way has been acquired.
  - Estimated cost is \$26M +.
  - No funding source has been identified for this project.







**Theodore Roosevelt**  
**EXPRESSWAY**

**Thank You**

**Cal Klewin Executive Director**  
**Theodore Roosevelt Expressway Association**