



Coahuila **strong**

Invest in Coahuila

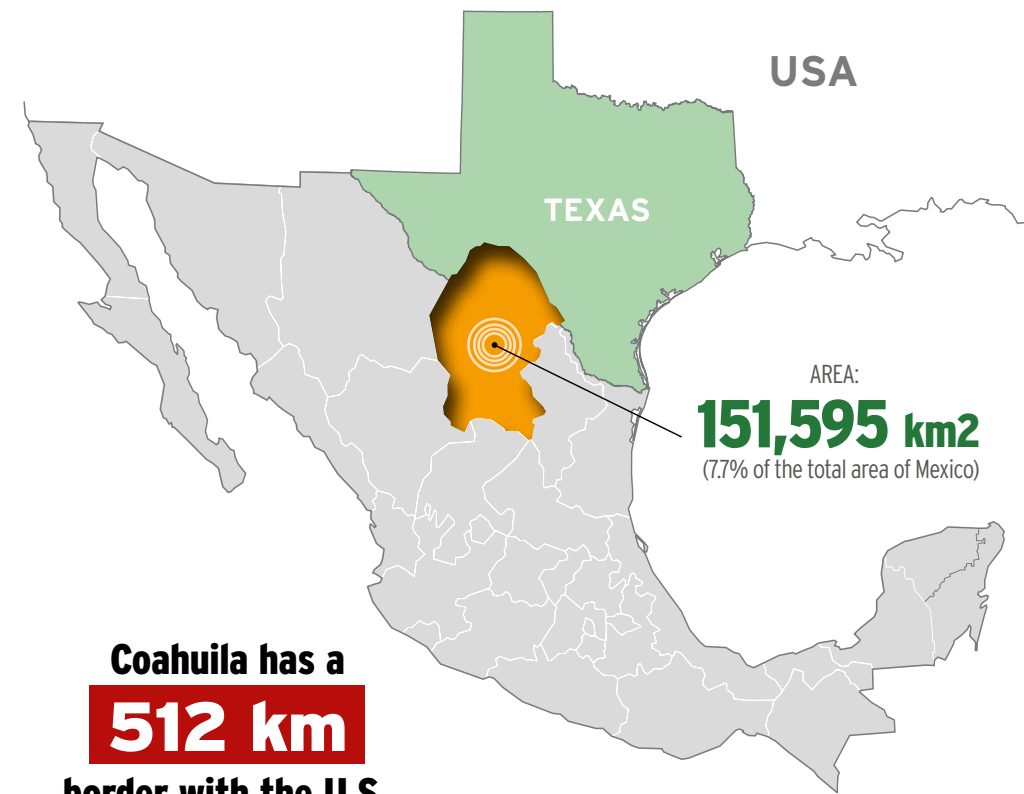


Invest in Coahuila

Territory



**Coahuila is the 3rd.
largest state in the country.**
It is located in the northeast of Mexico



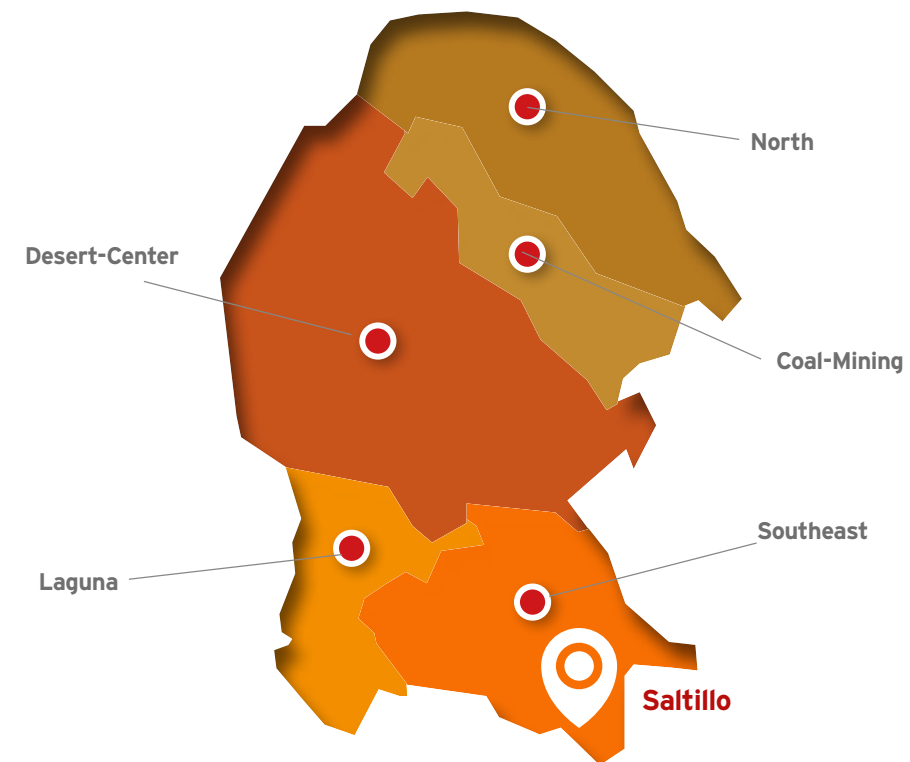
**Coahuila has a
512 km
border with the U.S.
(Texas)**



Invest in Coahuila

Demographic Indicators

Coahuila
strong



Coahuila's population
3,175,643

National population
126,577,691

This represents
2.5% country's total population

It is divided into
5 Regions

It has
38 municipalities

Its capital is
Saltillo

Invest in Coahuila

Main industries: Automotive industry

Coahuila
strong

The automotive cluster in Coahuila
is one **of the most important in Mexico**

Main companies in the automotive sector

OEM
DAIMLER
MERCEDES-BENZ



FCA
FIAT CHRYSLER AUTOMOBILES
GM

Coahuila host major assembly plants such as:
General Motors, Fiat Chrysler Automobiles
and Daimler Trucks

FCA
FIAT CHRYSLER AUTOMOBILES

The second largest investment made by
FCA in the world...

RAM 1500 PICK-UP of the year 2019



Over 1 million engines
are produced in Coahuila
each year.

In 2018, a total of over
1,039,000 vehicles and
82,000 tractor trailer
trucks were produced

SEC SECRETARÍA
DE ECONOMÍA

¡Fuerte,
Coahuila **es!**

Gobierno
del Estado Coahuila

Invest in Coahuila

Metal - mechanics

Coahuila
strong

More than **29,000** railroad cars were
manufactured in **2018**



22,800
PEOPLE
are employed
in this sector

 **Teksid**

 **Trinity Industries, Inc.**


GIMSA

SEC SECRETARÍA
DE ECONOMÍA

¡Fuerte,
Coahuila **es!**

Gobierno
del Estado **Coahuila**

Invest in Coahuila

Steel industry

Coahuila
strong

**Coahuila is the biggest producer of
liquid steel in the country**

Total production:
Over **5.7** million tons
per year



AHMSA
The largest
integrated iron
and steel
industry in
Mexico

MAIN COMPANIES



4.52 million tons



1.2 million tons

SEC SECRETARÍA
DE ECONOMÍA

¡Fuerte,
Coahuila **es!**

Gobierno
del Estado Coahuila

Agrofood industry

The Brewery Company located in Nava owns the most advanced, up to date technology



Their daily production is over **25 million bottles of beers**, which positions it as one of the most productive brewery in the world.



We are one of the most **important producers** of livestock, milk and dairy products in America

Invest in Coahuila

Renewable energy: Solar

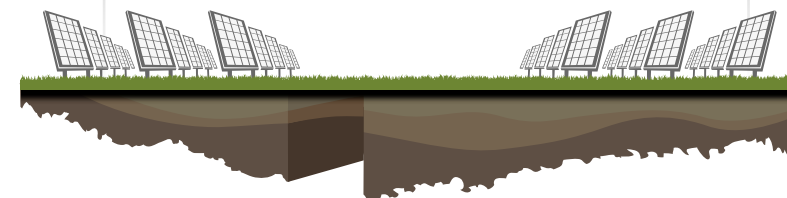
Coahuila
strong

Coahuila is one of the few states in Mexico that generates both, solar and wind energy on a large scale.

GREEN POWER:



One of the top companies in the world is located in Coahuila and it's the largest of its kind in Mexico



Coahuila has the biggest solar energy power plant in the american continent and one of the biggest in the world

Produces a total of **828 MW** and **2,000 GWh**, enough to provide energy for up to 2 million Mexican homes

More than **3 million solar panels**



Invest in Coahuila

Mining industry

Coahuila
strong

Coahuila owns **95%** of all
coal reserves in Mexico

**THE BIGGEST GLOBAL
PRODUCER**
of coke, coal, celestite,
dolomite, sodium sulfate

The world's
**LARGEST
PRODUCER**
of refined silver

64.9 million Silver oz.
in 2018

The largest
producer of sulfates in
the Western
Hemisphere

We produce over **12%** of Mexico's energy.

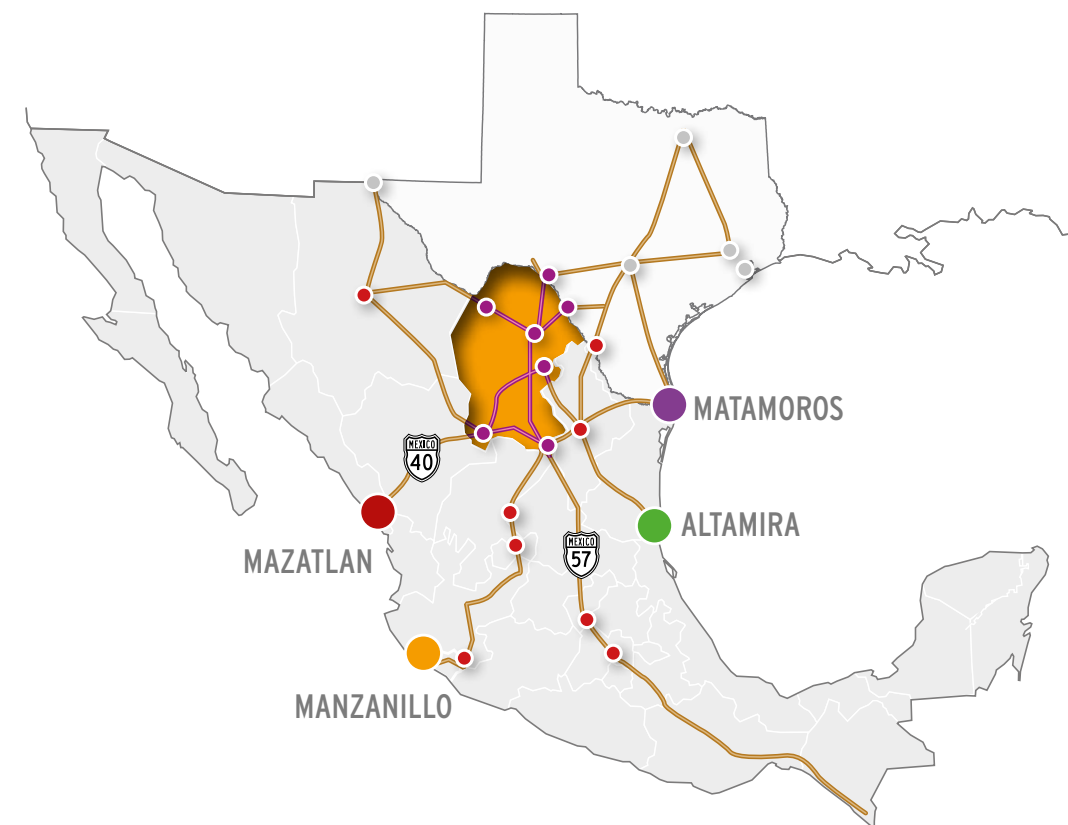


Invest in Coahuila

Highways

Coahuila
strong

Coahuila's geographic location provides easy access
to all the main markets in the world



Over
8,500 km
of highways

Two of Mexico's major highways
go through Coahuila



Coahuila is located:

383 km from Matamoros port

485 km from Mazatlan's port

567 km from Altamira's port

1,026 km from Manzanillo's port



Invest in Coahuila

Railways



Coahuila
is one of the few states were both of the
railroad companies of Mexico merge

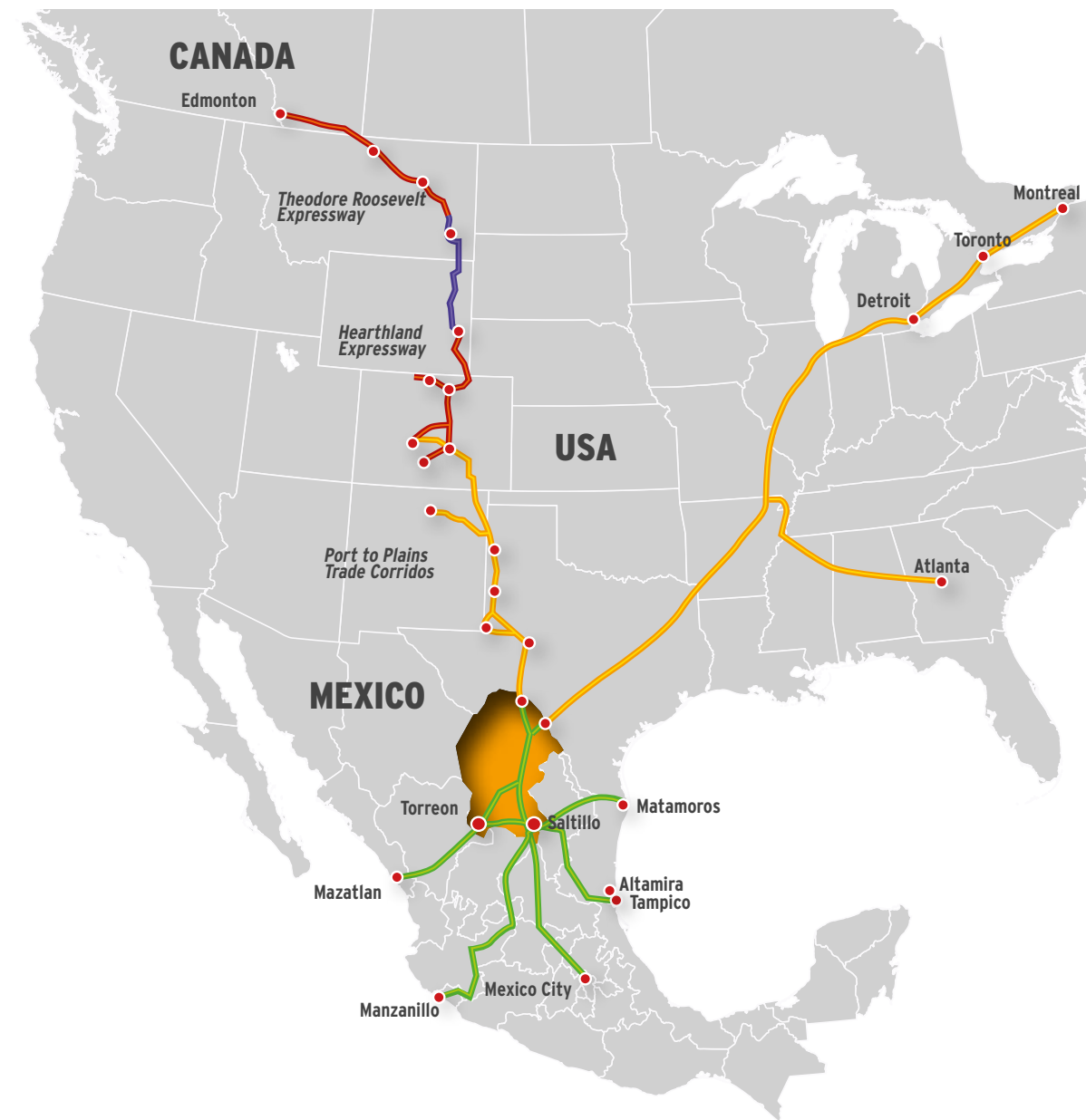


Invest in Coahuila

Port to plains

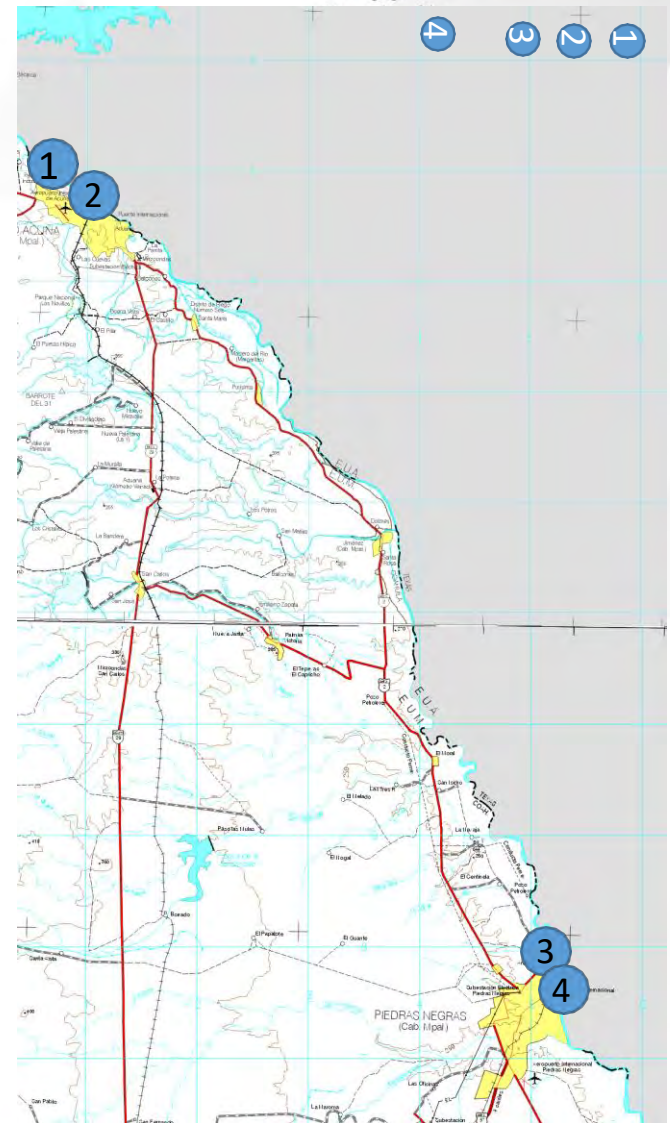


Coahuila is part of the **Port To Plains Strategy**, which connects USA, Canada and Mexico.



STRATEGIC BORDER PROJECTS

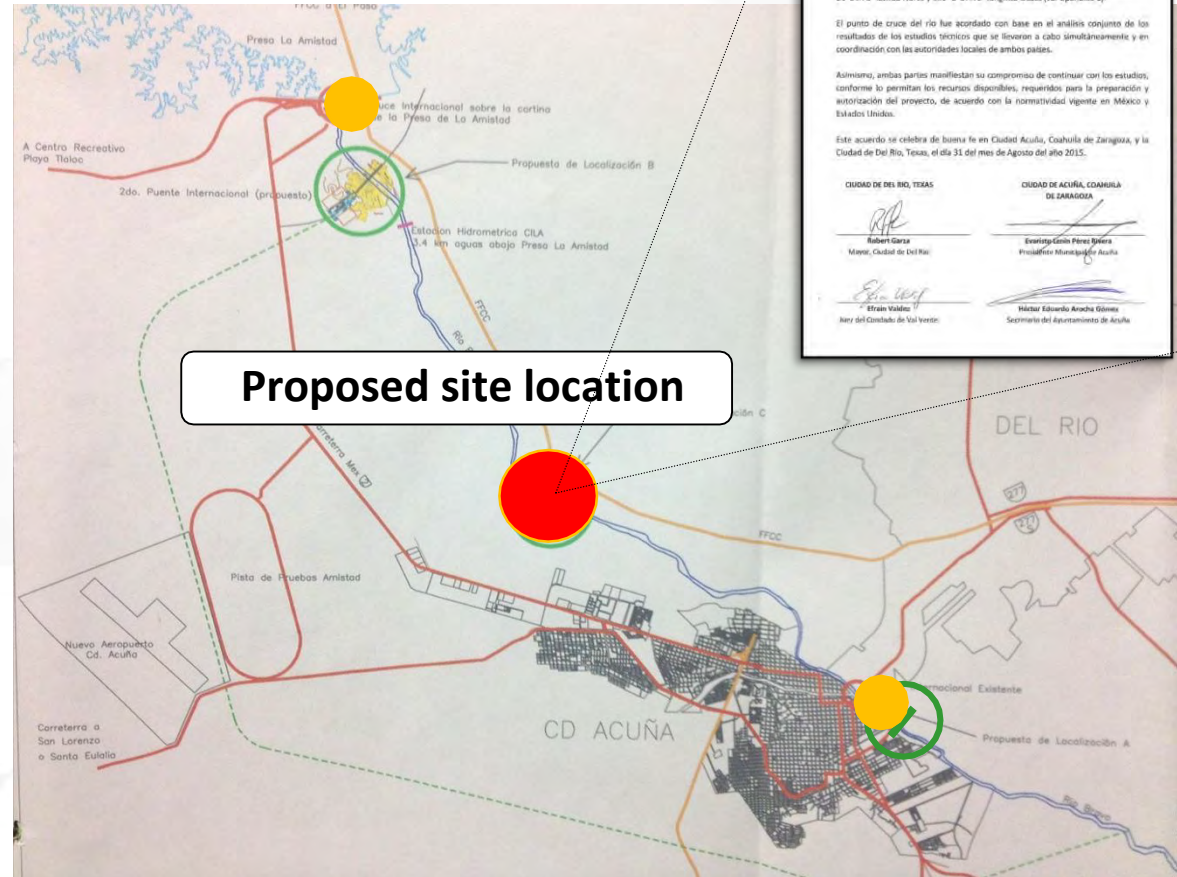
1. SECOND BRIDGE CD. ACUÑA INTERNATIONAL
(In the study phase)
2. RECENTLY MODERNIZED ACUÑA'S PORT OF ENTRY
3. WORK IS CURRENTLY UNDER WAY ON RAIL
IMPROVEMENTS ON THE PIEDRAS NEGRAS
INTERNATIONAL BRIDGE II
4. THIRD INTERNATIONAL BRIDGE PIEDRAS NEGRAS
(Initial phase)



INTERNATIONAL BRIDGE ACUÑA-DEL RIO II

THE AGREEMENT SIGNED IN 2015 BY THE CITY OF DEL RIO,
THE COUNTY OF VAL VERDE, CIUDAD ACUÑA AND THE GOVERNMENT OF
COAHUILA, OF THE PROPOSED CROSSING SITE FOR THE CONSTRUCTION
OF THIS INTERNATIONAL BRIDGE

CURRENTLY THE GOVERNMENT OF
COAHUILA CARRIES OUT THE STUDY
OF THE SECOND STAGE OF THE
MANAGEMENT PROCESS THAT
ALLOWS THIS PROJECT TO BE
REGISTERED IN
THE BINATIONAL AGENDA.



HIGHWAY INFRASTRUCTURE



HIGHWAY 57

MEXICO'S MOST IMPORTANT HIGHWAY

THE COAHUILA STATE
GOVERNMENT ALONG WITH THE
PRIVATE SECTOR WILL
INVEST OVER 50 MILLION USD
ON THE CONSTRUCTION AND
MODERNIZATION OF 3 RELIEF
ROUTES (LOOPS) FOR A TOTAL OF
25KM OF HIGHWAY.

HIGHWAY INFRASTRUCTURE

LIBRAMIENTO MORELOS – ZARAGOZA Carr. Fed 29



LONGITUD | **16.40 Km**

This relief route will reduce the travel time from the center of the country with direction to Ciudad Acuña, avoiding passage through the cities of Morelos and Zaragoza

TDPA	A%	B%	C%
2,956	90.3%	3.2%	6.5%

LIBRAMIENTO DE SABINAS – AGUJITA (op. A)
Carr. Fed. 57

LONGITUD | 7.2 Km



This relief route will reduce the travel time from the port of Mazatlán and the Laguna region bound to Piedras Negras and Ciudad Acuña, avoiding passing through the cities of Sabinas, Nueva Rosita and particularly the community of Aguajita.

TDPA	A%	B%	C%
3,797	69.6%	3.5%	26.9%

INFRASTRUCTURE PROJECTS - FEDERAL HWY 30



HIGHWAY 30

THE COAHUILA STATE GOVERNMENT ALONG WITH THE PRIVATE SECTOR WILL INVEST OVER 35 MILLION USD ON THE CONSTRUCTION AND MODERNIZATION OF 22KM OF 4 RELIEF ROUTES.

INFRASTRUCTURE PROJECTS - FEDERAL HWY 30

LIBRAMIENTO DE NADADORES Carr. Fed. 30

LONGITUD

5.2 Km



This relief route will reduce the time traveled from the port of Mazatlan and the Laguna region bound for Piedras Negras and Ciudad Acuña, avoiding passing through the city of Nadadores

TDPA	A%	B%	C%
2,930	74.1%	2.8%	23.1%

INFRASTRUCTURE PROJECTS - FEDERAL HWY 30

LIBRAMIENTO DE SACRAMENTO Carr. Fed. 30



LONGITUD

3.5 Km

Description of the Project

This relief route will reduce the travel time from the port of Mazatlan and the Laguna region bound for Piedras Negras and Ciudad Acuña, avoiding passage through the city of Sacramento.

TDPA	A%	B%	C%
2,930	74.1%	2.8%	23.1%

INFRASTRUCTURE PROJECTS - FEDERAL HWY 30

LIBRAMIENTO DE CUATRO CIÉNEGAS Carr. Fed. 30

LONGITUD

5.8 Km

Description of the Project

This relief route will reduce the travel time from the port of Mazatlan and the Laguna region bound for Piedras Negras and Ciudad Acuña, avoiding passing through the city of Cuatrociénegas.



TDPA	A%	B%	C%
1,224	68.6%	3.4%	28.0%

INFRAESTRUCTURA EN LA FRANJA FRONTERIZA DE COAHUILA - TEXAS

CARRETERA FEDERAL 30

LIBRAMIENTO DE SAN PEDRO Carr. Fed. 30

LONGITUD

3.7 Km

Description of the Project

Improvements in the connection of release existing in its connections with federal highway 30 to Cuatrociénegas and to Torreón in steep curve

Width of 12 meters with 2 lanes of 3.5 meters and dimensions of 2.5 meters and project speed of 80 km/h

Two junctions at level



TDPA	A%	B%	C%
1,960	68.2%	3.1%	28.7%



Coahuila
strong

Our main objective is to
establish a close relationship with your Company
in order to see that your goals are fulfilled

¡Fuerte,
Coahuila **es!**



Contact:

Jorge Ramon Montemayor

josejorge.ramon@coahuila.gob.mx

Tel. +52 (844) 622-0351



Coahuila
strong



Coahuila
strong

Invest in Coahuila