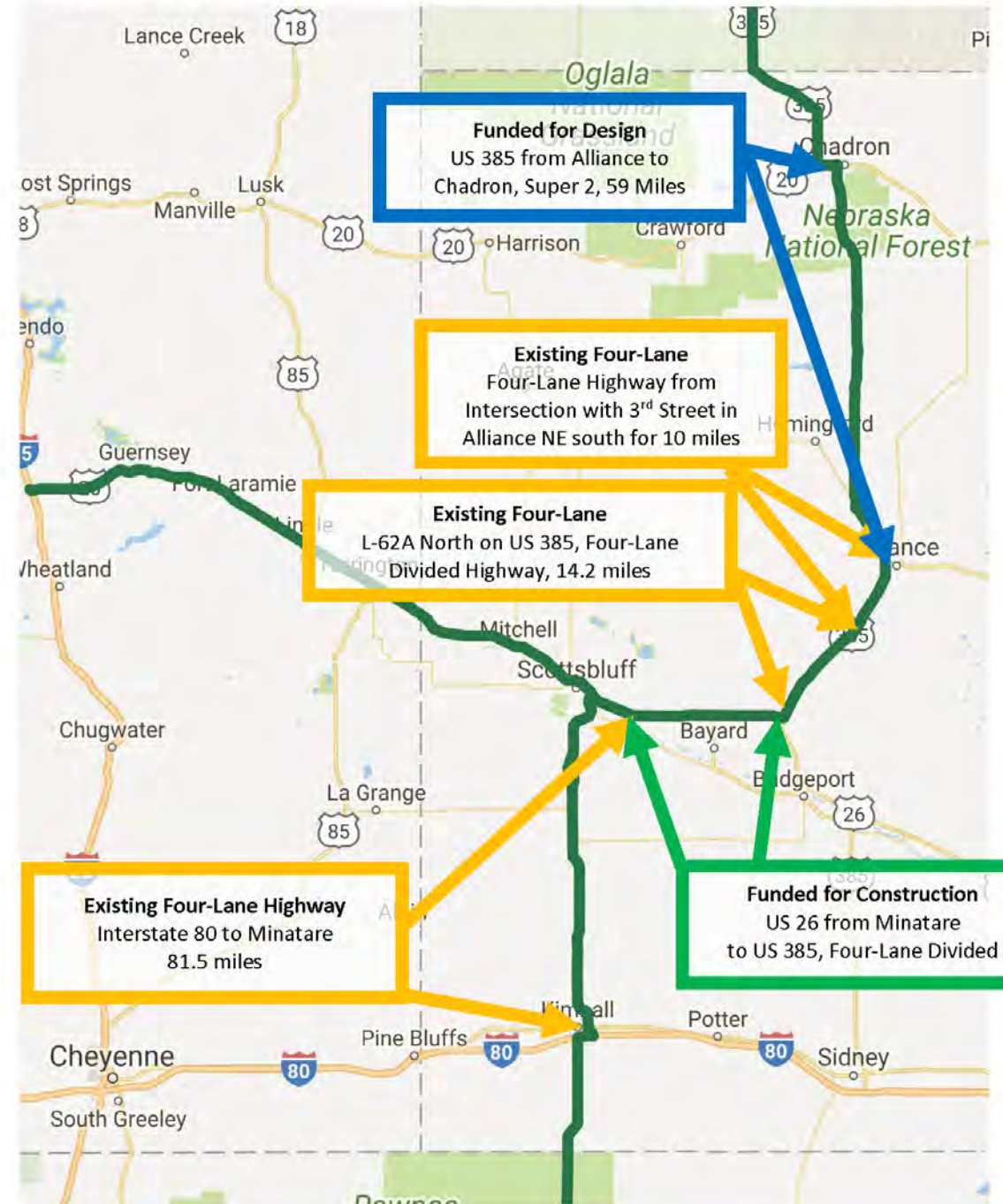




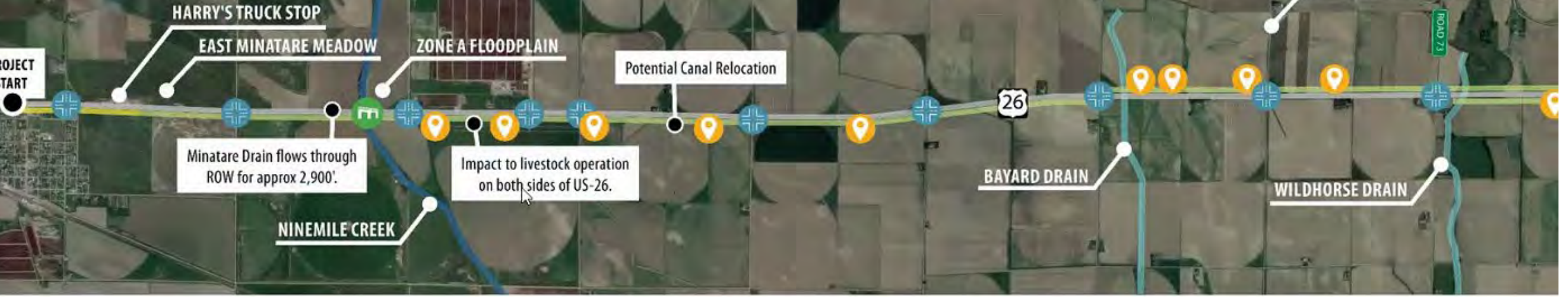
Heartland Expressway Regional Update

Fort Morgan, CO July 12, 2023

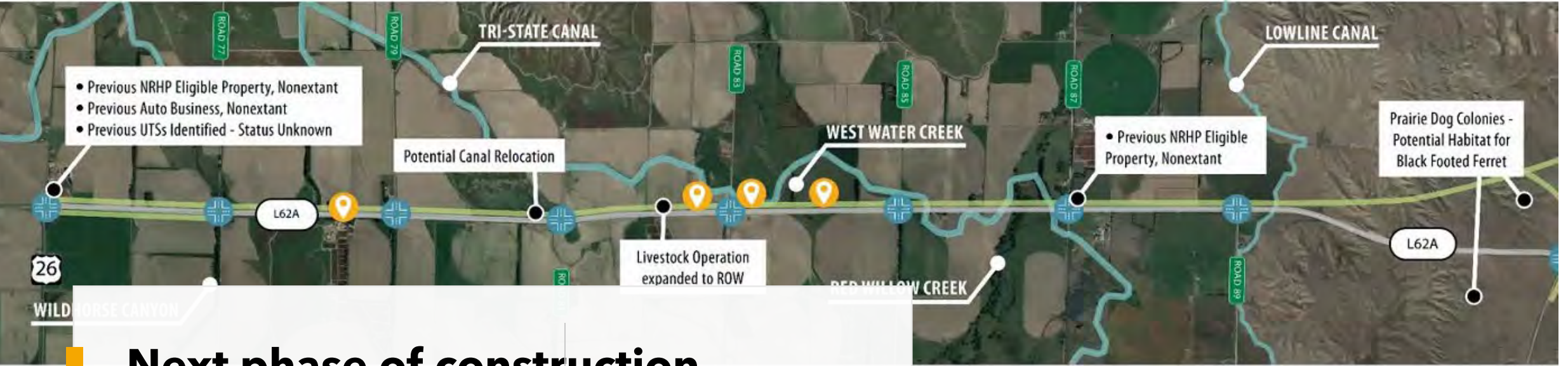
Nebraska Heartland Expressway Corridor Status



Nebraska Heartland Expressway Corridor Status



SEGMENT 2



**Next phase of construction
east of Minatare to US Highway 385**



HEA booth at Western NACO meeting

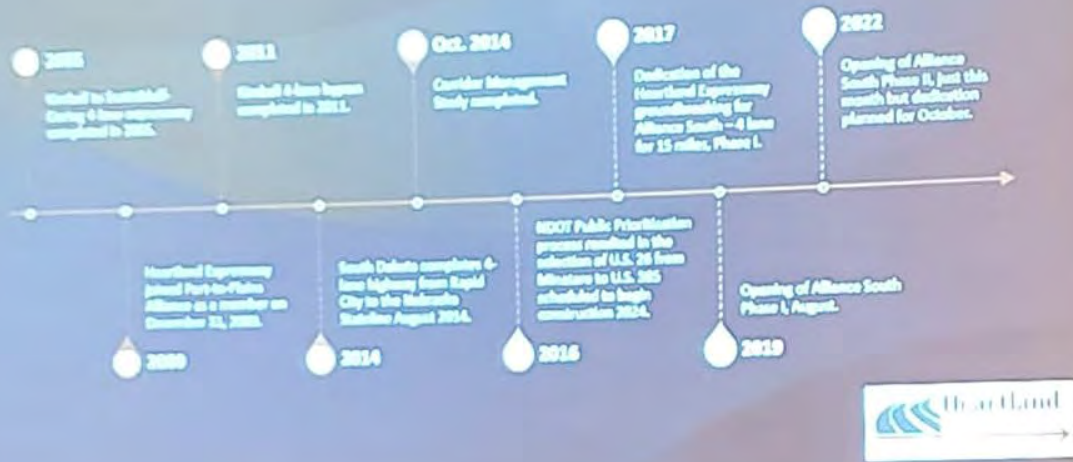




NE Highway Commission
Reception

NE Highway Commission reception, Alliance, NE

History of the High Priority Corridor



Heartland Progress report at Ports to Plains Annual meeting in Big Spring, TX





Heartland Board members, Ports to Plains Director and US Senator Pete Ricketts in Washington, DC



Congressman Jody Arrington with Ports to Plains Board in Washington, DC



NDOT Director Kramer with Leadership class

For More information contact:

Amy Sapp amys@nepadd.com or

Deb Cottier dcottier@gpcom.net 308-432-4023

